

# PICSG Code of Practice for Fogging CIPC

2016-17



## Responsibilities

Fogging of CIPC is covered by the Code of Practice for using Plant Protection Products. It is the **owners** responsibility to ensure potatoes being marketed are compliant with the law.

Application staff must be **NPTC** qualified.

Equipment must be **NSTS** tested annually.

Recommendations for CIPC use must come from **BASIS** advisors who have inspected the crop in the store.

## Application

The store must be suitable for fogging, a **PICSG Store Checklist** must be completed before any application is carried out.

The end market for the potatoes must be defined and best practice observed. 2016 crops are limited to **24g and 42g per tonne** respectively, for fresh and processing markets. Where storage temperature will be **≤5°C**, only one application is permitted, before the store temperature is reduced below 7°C. Initial application of CIPC must always be made **early**. The withholding period for CIPC is now **14 days**.

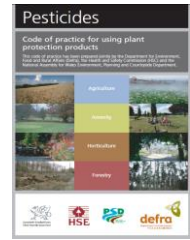
Demand for treatments is a function of the store and the crop – minimise CIPC demand with good management and where necessary **upgrading the store**. All applications, from the 2017-18 season onwards, will require fog to be “actively recirculated”.

## Crop assurance schemes

Crop assurance schemes may require additional checks. The **Red Tractor** scheme works with PICSG to introduce *best practice*. CIPC must be applied by a member of the **NAAC** applicators group.

## Chain of custody

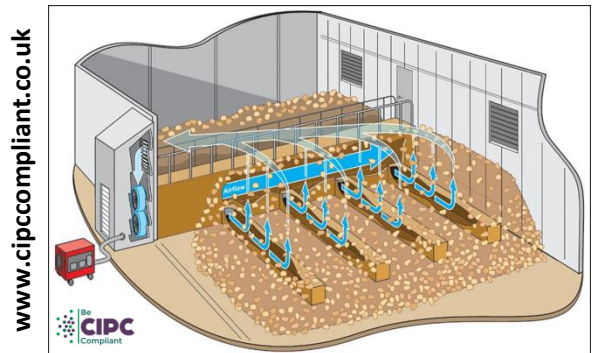
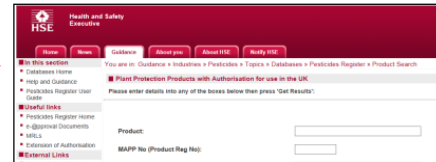
Where crops are sold on for re-sale, the total dose of CIPC and date of last application must be declared.



PA1 and PA9



STORE CHECKLIST		CONTRACTOR FORM: FOR SINGLE USE ONLY IN THE ABSENCE OF A COMPLETED CHECKLIST			
Key Issue	Guidance	Yes	No	Not Applicable	Not Inspected
STORE LOCATION	Proximity to residential property, proximity to watercourses, roads, and other goods.				
STORE INTEGRITY	Not in contact with other crops, no holes or gaps in walls, roof or floor, no leaks, no signs of water damage, no signs of pest infestation.				
EMPTY AIR SPACE IN STORE	Empty air space in store must be at least 10% of the total volume of the store.				
CIPC APPLICATION POINT	Proximity to watercourses, roads, and other goods. Proximity to residential property, proximity to watercourses, roads, and other goods.				
INDOOR STORE ENVIRONMENT	Temperature, humidity, and air quality. Proximity to watercourses, roads, and other goods.				
BULK STORE SUSTAINABILITY	Proximity to watercourses, roads, and other goods. Proximity to residential property, proximity to watercourses, roads, and other goods.				
BOX STORE SUSTAINABILITY	Proximity to watercourses, roads, and other goods. Proximity to residential property, proximity to watercourses, roads, and other goods.				



www.cipccompliant.co.uk



**Use plant protection products safely. Always read the label and product information before use.**